



NAVNAUTIK

SINGAPORE – INDIA

NAVAL ARCHITECTS | MARINE ENGINEERS | MARINE SURVEYORS | RECYCLING CONSULTANTS



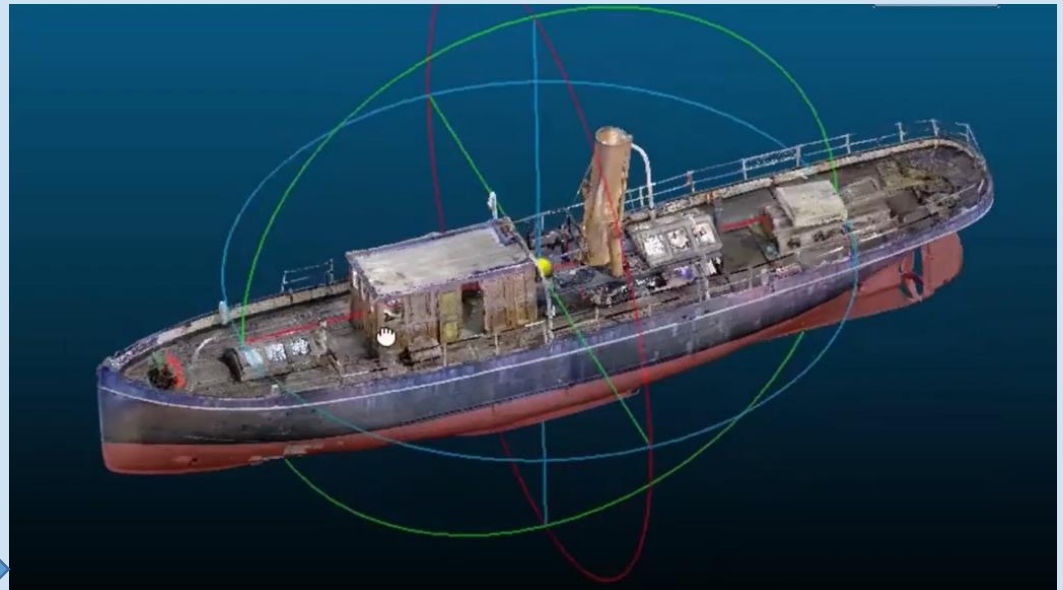
New-age technology
for
Reverse engineering
&
Virtual tour
of marine vessels and
offshore structures

NAV-CAM



Two useful applications for
ship owners and shipyards
(cloud-based hence paperless)

NAV-SCAN



NAV-CAM

NAV-CAM allows you to virtually access your vessel anytime from anywhere in the world with 360° 3D walk-through as per your interest area (engine room, mooring deck, wheelhouse, cabins, etc.) of the vessel.

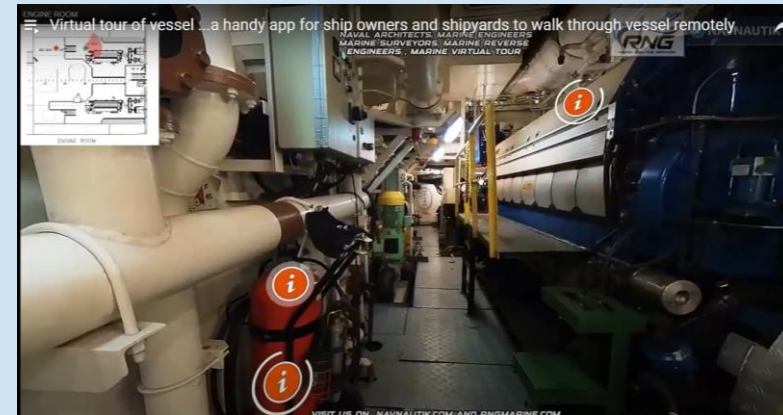
What is the advantage using NAV-CAM?

For New Building & Retrofit / Conversion of existing ships

- Can be kept as an As Built documentation before ship delivery as an evidence and justification whenever any claim / incident / accident happens after delivery
- Can be used for engineering review (ship design evaluation / modification for future) without physically visiting the vessel
- As a digital documentation can be used for ship familiarization & ready reference for trainee crew member before going on-board
- Equipment description and its manual can be incorporated using point tag feature for future upgradation / replacement.
- Can be used as a marketing presentation for potential client during charter / resale before physically visiting the ship (which is a cost element)

Click below for NAV-CAM tour

<https://youtu.be/3Fdftw29pSE?si=OmyN6XR7KOMs7hB>



NAV-SCAN

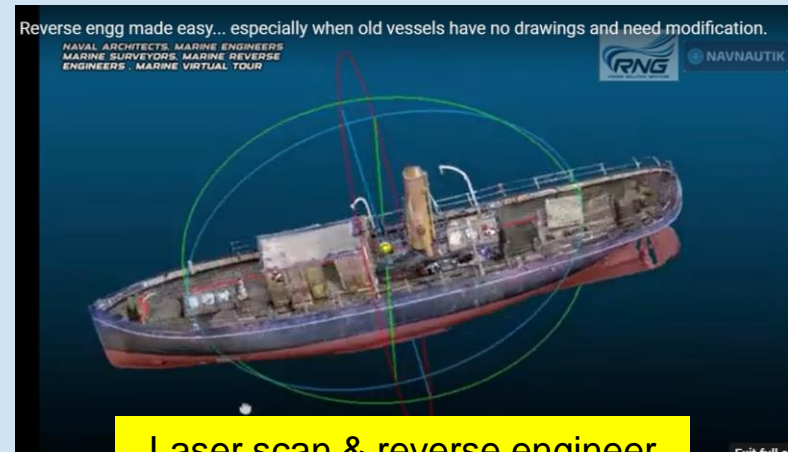
NAV-SCAN is a cost saving application of reverse engineering suitable for hull structure and outfitting modification, piping system retrofit, conversions and creation of database for vessels having limited or no data available on-board.

What is the advantage using **NAV-SCAN**?

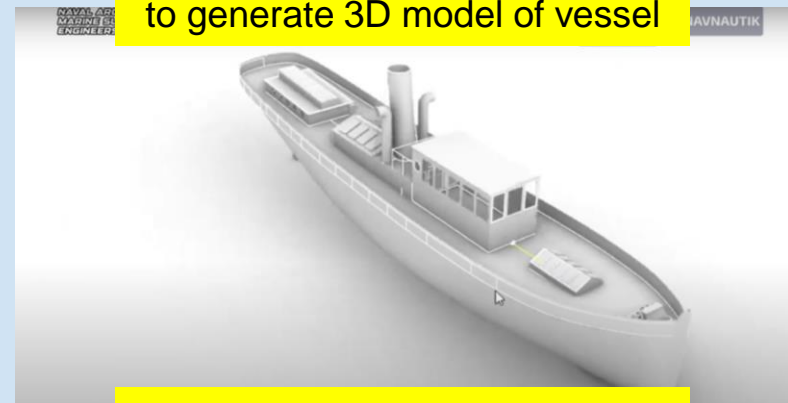
- Vessel modification, conversion, retrofit and upgrade jobs involve tight timeline and limited space at yard and on-board the vessel.
- Hence is typically expensive & time consuming with inaccurate measurement & possibility of on-board interference between equipment / structure.
- To solve we use laser scan as one tool of reverse engineering. It provides higher level of accuracy and can be done while the ship is in operation.
- Simultaneous prefabrication onshore provides a reduction in cost and time since the vessel is still in operation.
- The early availability of engineering data empowers shipyards and ship-owners to plan projects and procure materials for immediate implementation upon the vessel's arrival at dock, thus significantly reducing the vessel's downtime.
- Old vessels with no or little data on-board can use NAV-Scan to generate a digital database as needed.

Click below for **NAV-SCAN** tour

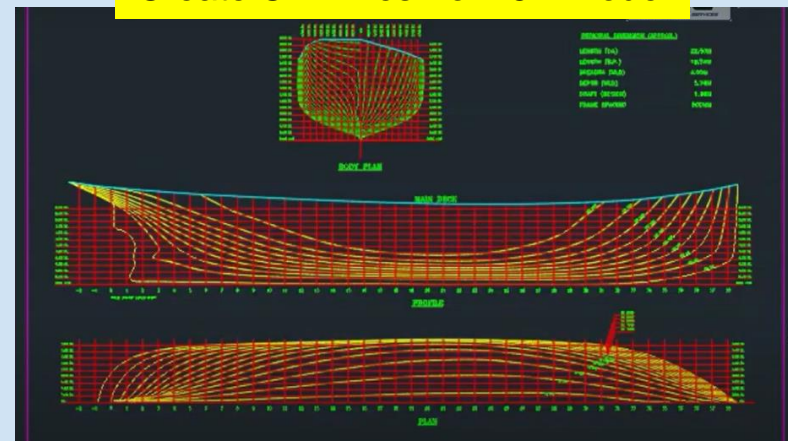
<https://youtu.be/qrqG-PsQtPM?si=BOmly3HcbVa3Mb6y>



Laser scan & reverse engineer to generate 3D model of vessel



Create CAD files from 3D model



REACH US AT:

NAVNAUTIK PTE LTD, SINGAPORE
NAVNAUTIK TECHNICAL SERVICES PVT LTD, INDIA
CV. REKACIPTA NUSA GEMILANG, INDONESIA

NAVAL ARCHITECTS
MARINE ENGINEERS / SURVEYORS
RECYCLING CONSULTANTS
MARINE APP DEVELOPERS
MARINE INTERIOR DESIGNERS



NAVNAUTIK PTE LTD, SINGAPORE

+65-96390308 / NPL@navnautik.com / navnautik@gmail.com

NAVNAUTIK TECHNICAL SERVICES PVT LTD (INDIA)

+91-9831045428 / ntskolkata@navnautik.org / ntskolkata@gmail.com



Authorised exclusive representative for **INDONESIA**

CV. REKACIPTA NUSA GEMILANG

+62-81252660445 / rekaciptanusagemilang@gmail.com

Authorised exclusive representative for **PHILIPPINES**



<https://www.navnautik.com>